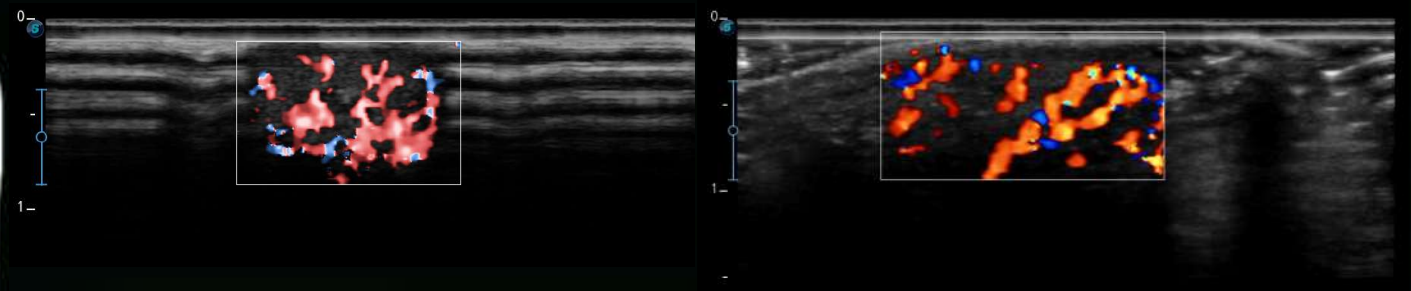


**SonoScape**

# LIGHTEN YOUR IMAGING

SonoScape continues our revolution in X Series with the introduction of the new transducer 12L-B. This high-frequency transducer demonstrates details in the skin layers, as well as superficial ligaments and tendons. Meanwhile, blood flow will also be further enhanced that makes it possible to visualize small structures.



# New Premium Transducers

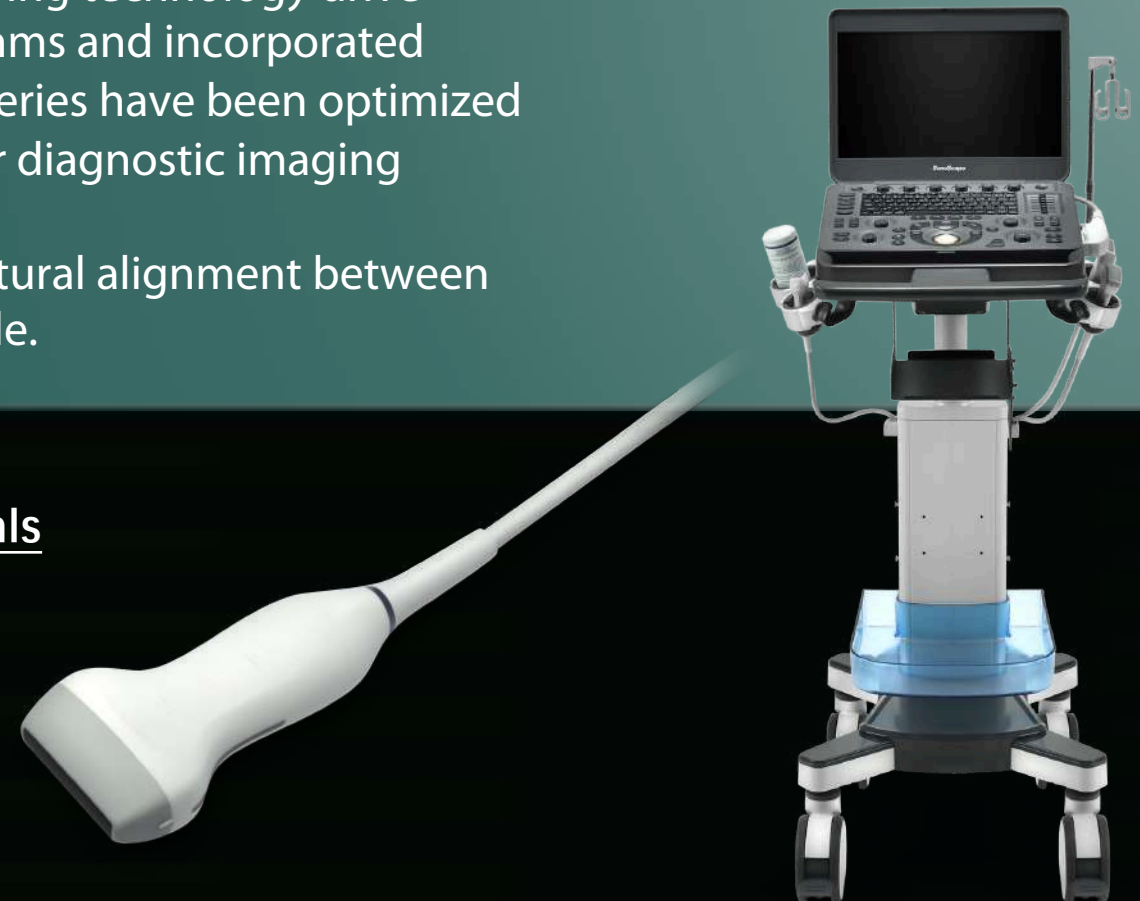
## Achieve New Level of Clarity And Utility

New transducer design, quality of materials and manufacturing technology drive image quality. The scan converters, post processing algorithms and incorporated technologies of the new series premium transducers on X Series have been optimized to deliver greater clarity, color and contrast supporting your diagnostic imaging challenges.

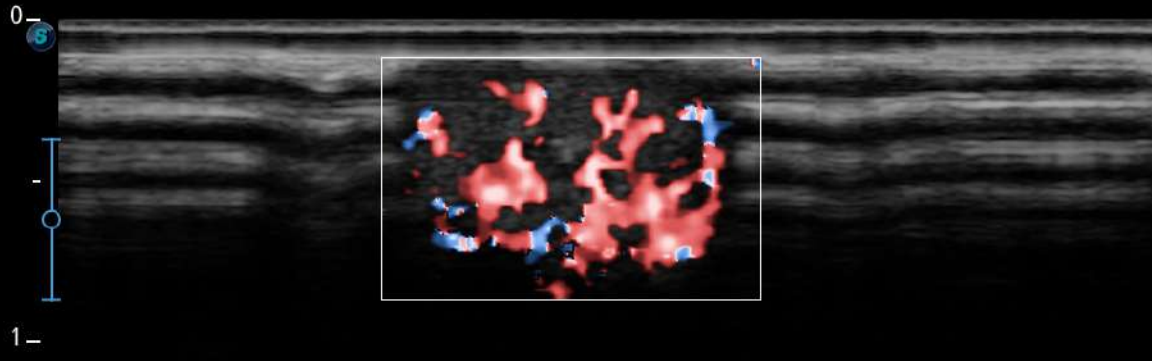
Moreover, the compact and lightweight design ensure a natural alignment between the hand and wrist, making daily scanning more comfortable.

### **12L-B** Integrated By Composite Crystal Materials

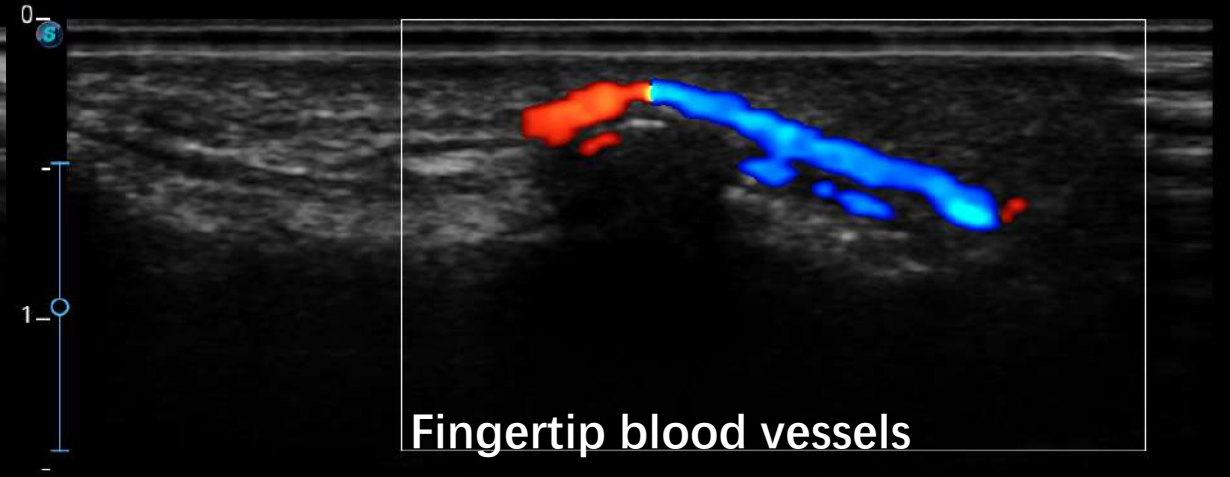
- High resolution for **superficial scanning**
- High signal-to-noise ratio
- 42mm footprint designed for joint scanning
- Wide frequency range, can improve the image quality of specific area



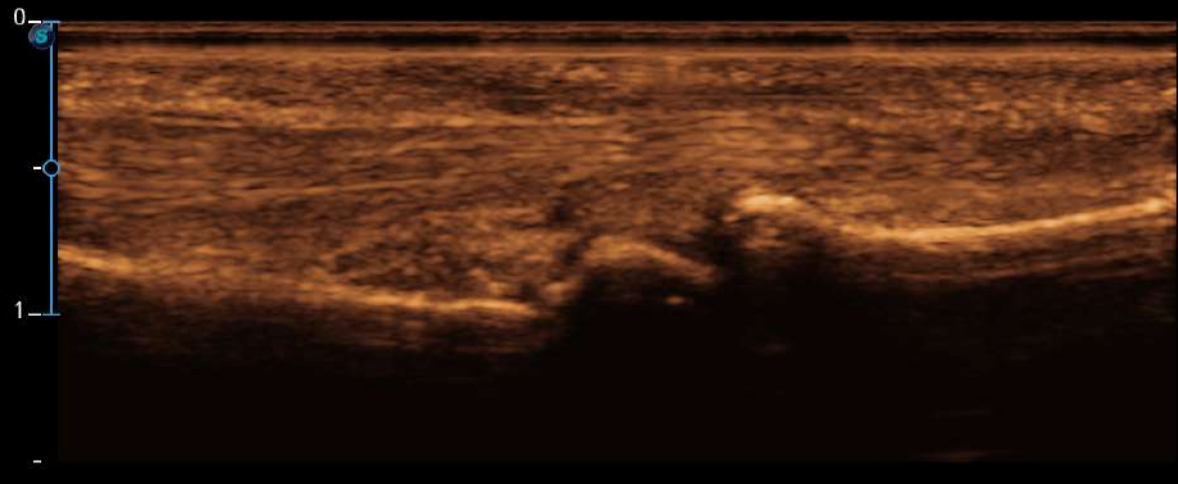
# Image Gallery <sup>12L-B</sup>



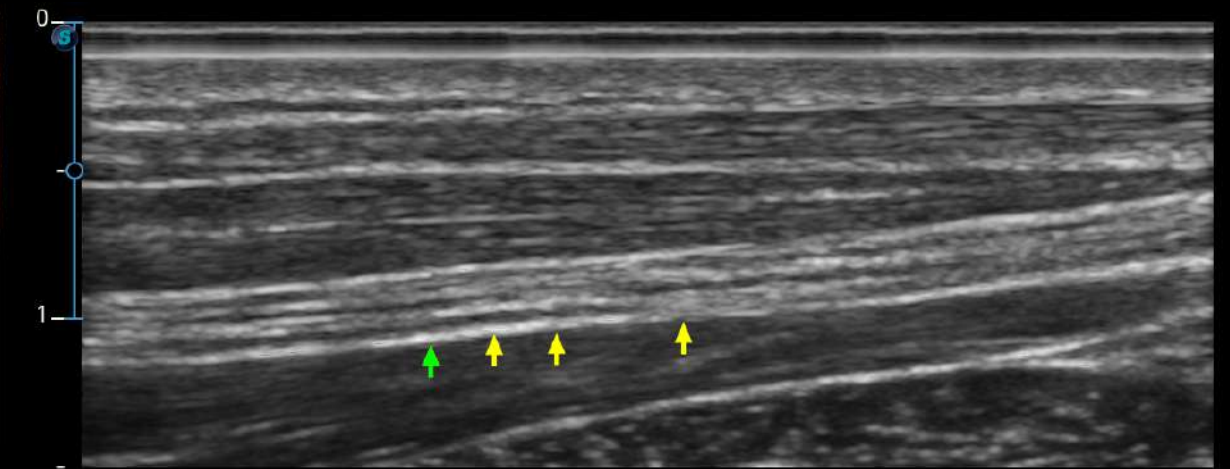
Fingertip capillaries with SR-Flow



Fingertip blood vessels



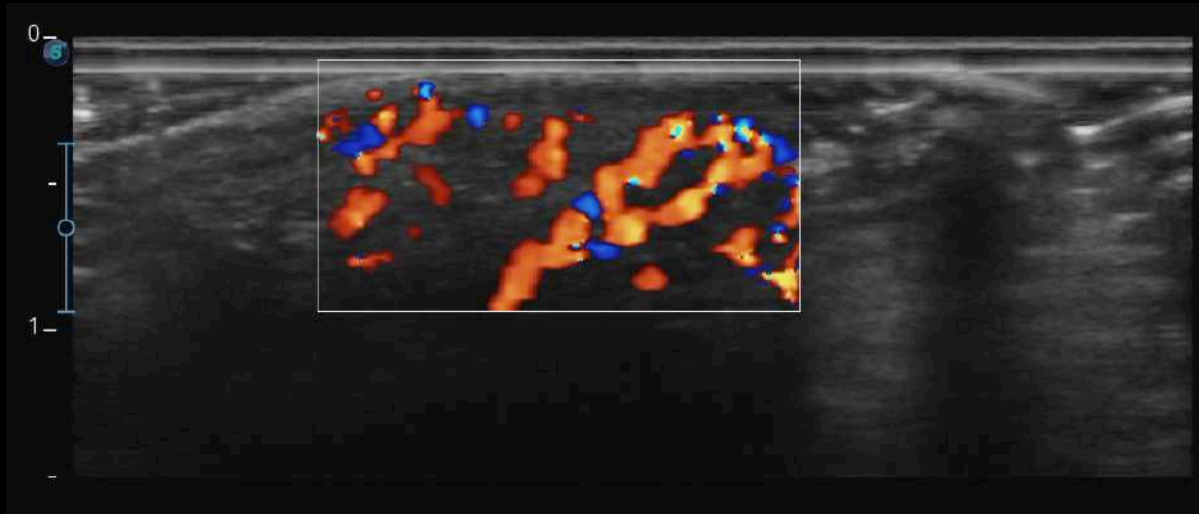
Finger tendons



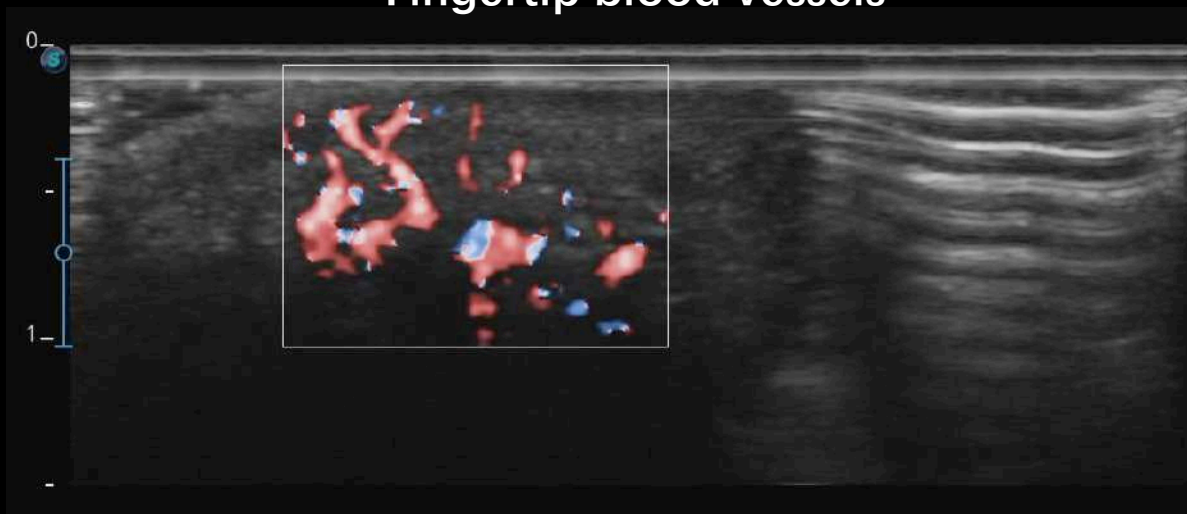
Median nerve

# Video Gallery 12L-B

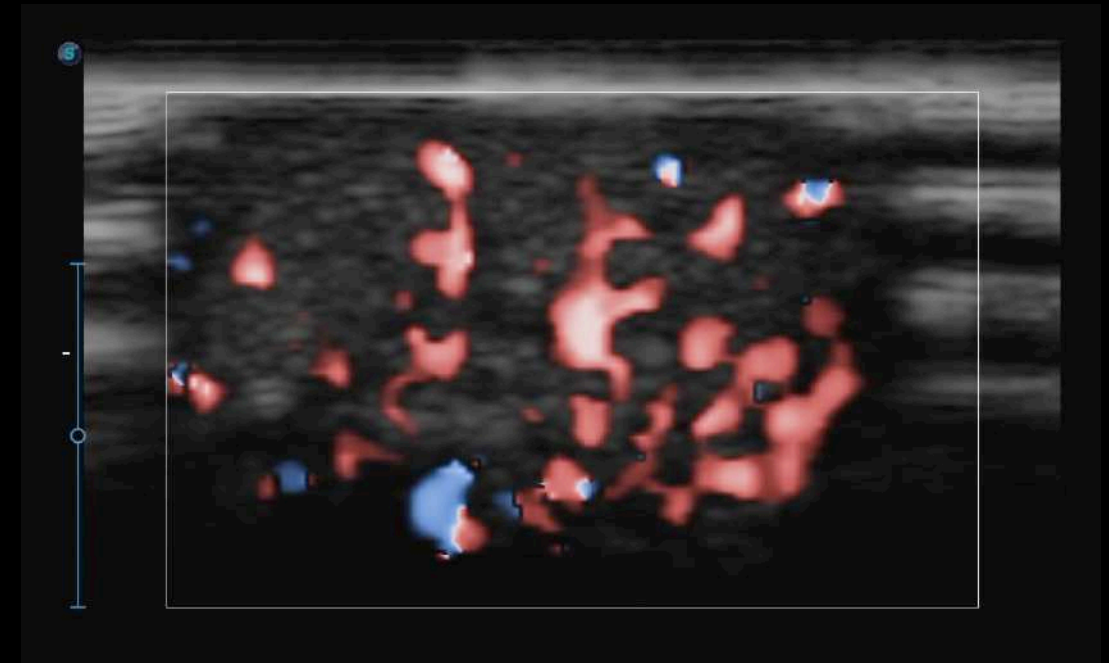
SonoScape



Fingertip blood vessels



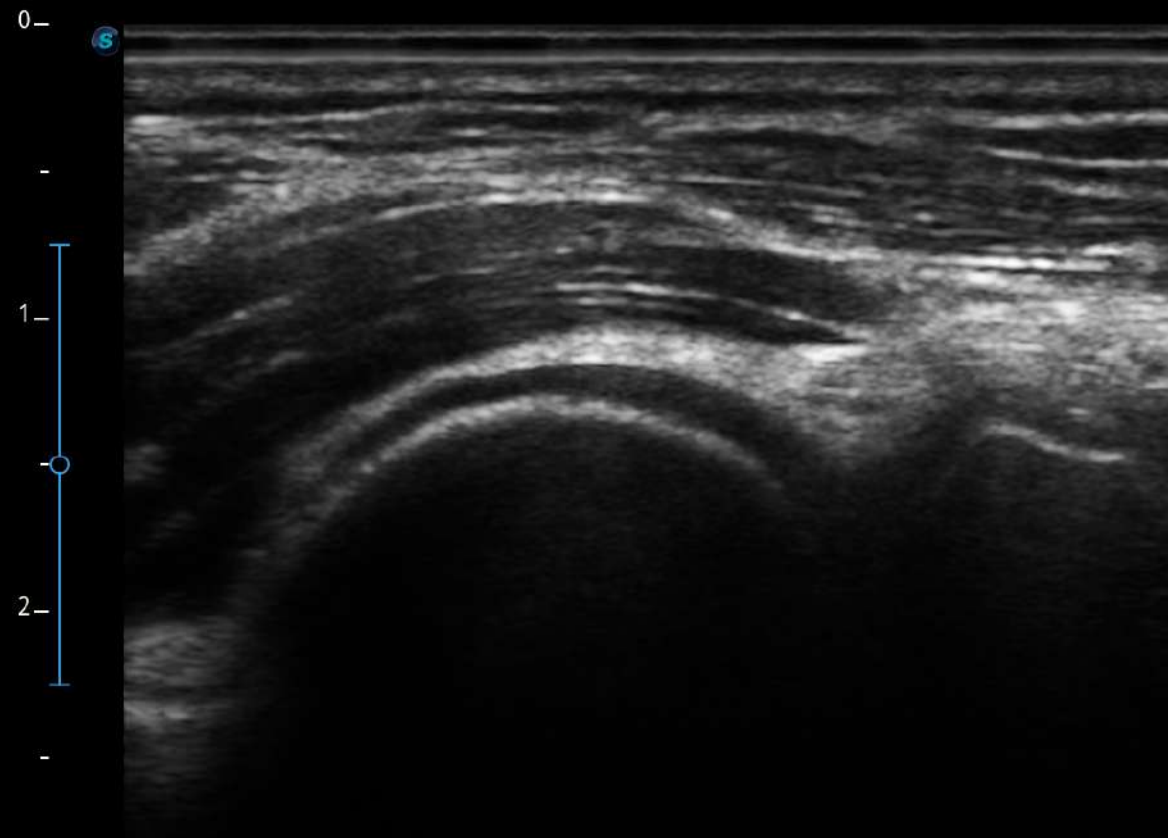
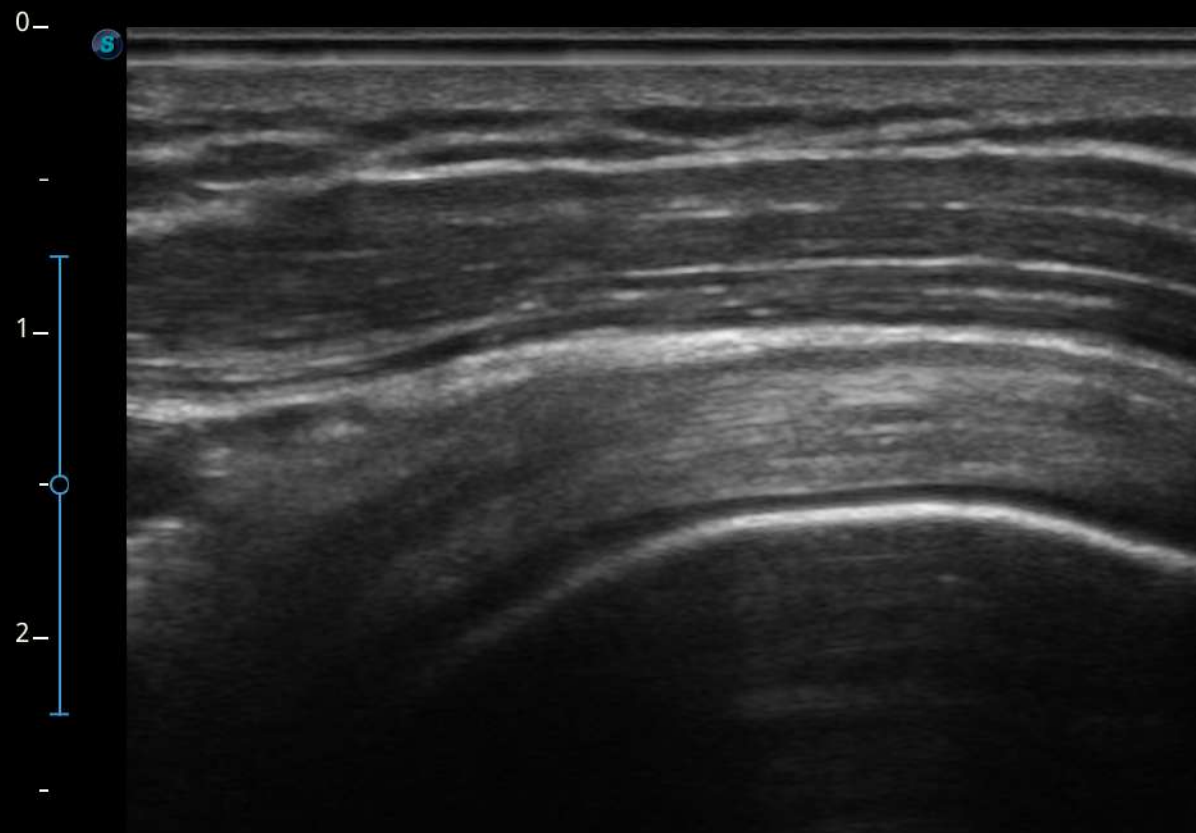
Fingertip blood vessels with SR-Flow



Fingertip capillaries with SR-Flow  
(With Zoom)

# Image Gallery <sup>12L-B</sup>

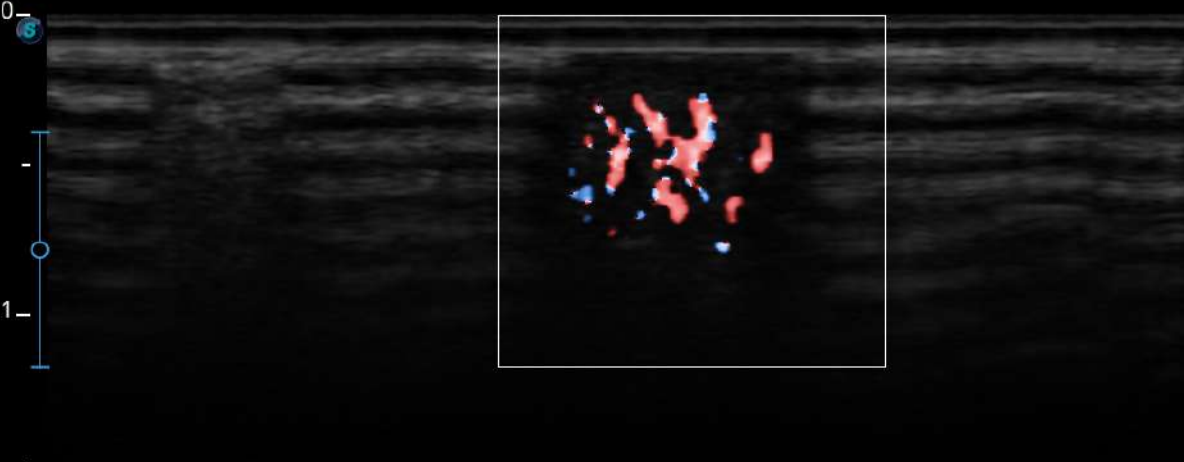
**SonoScape**



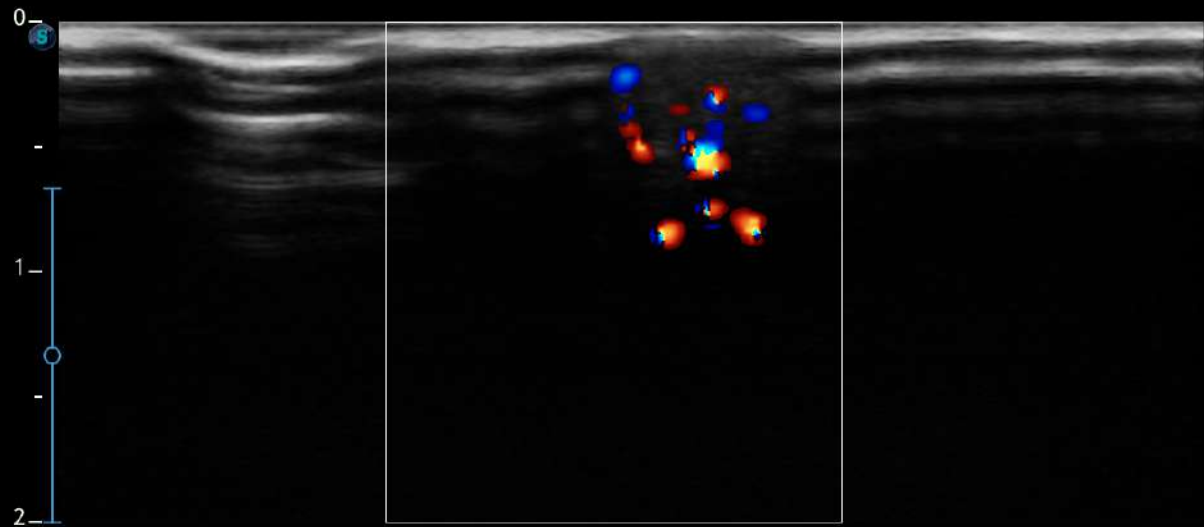
# Image Comparison

12L-B VS. L741

*SonoScape*



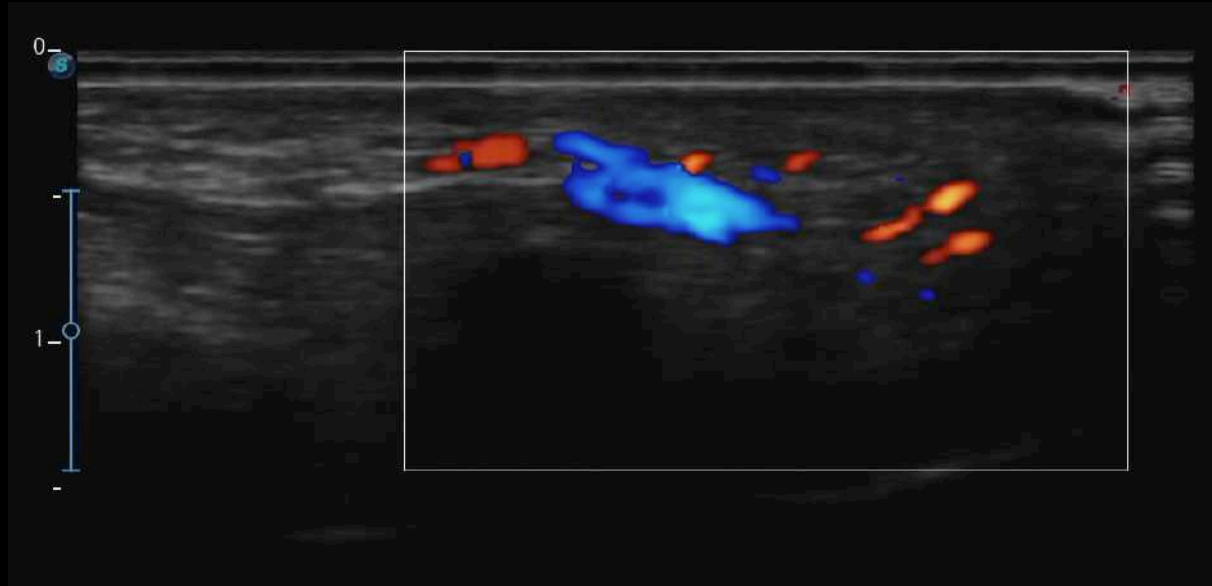
**12L-B SR-Flow**



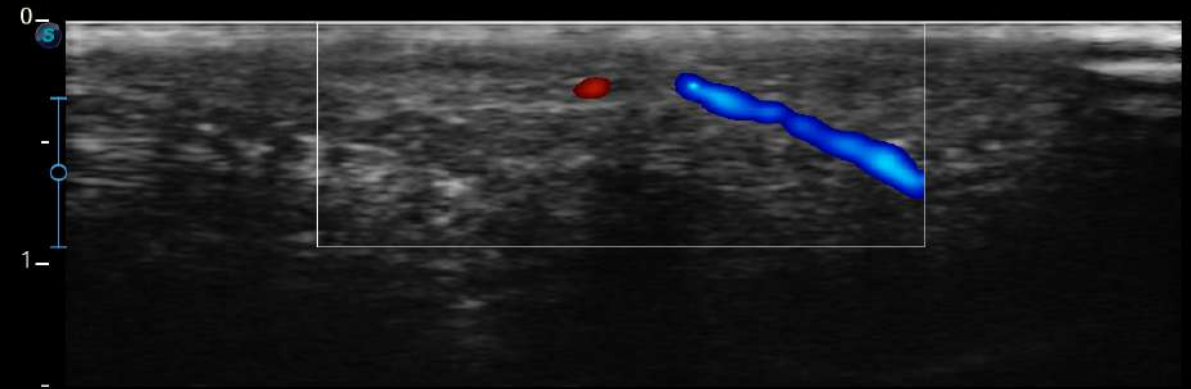
**L741 CFM**

# Image Comparison 12L-B VS. L741

**SonoScape**



**12L-B**



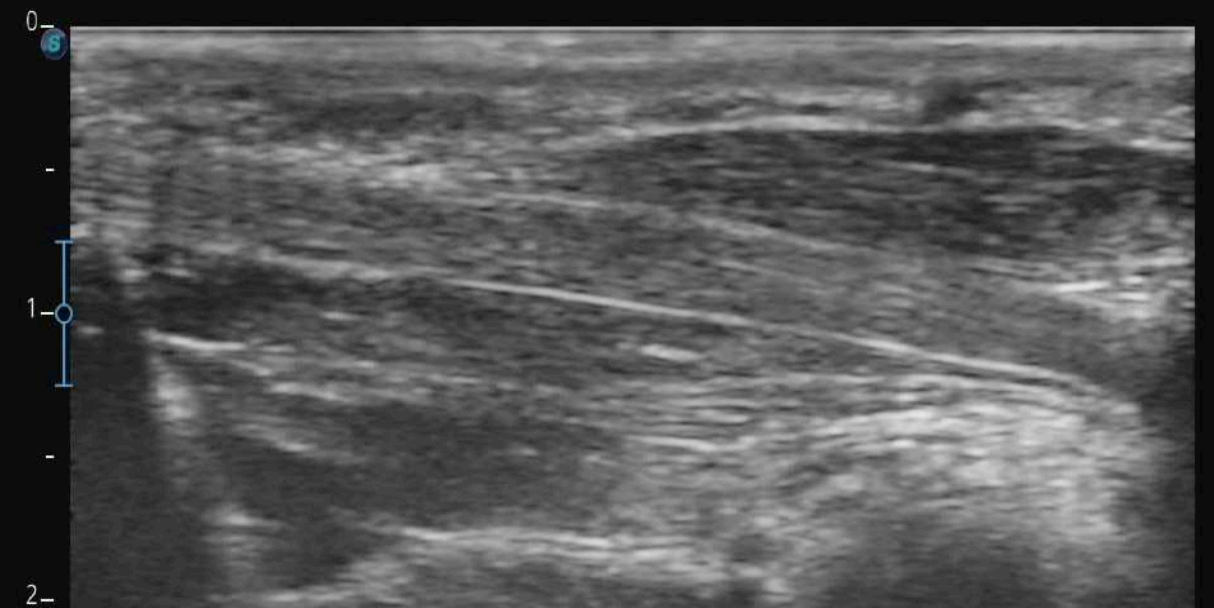
**L741**

# Image Comparison 12L-B VS. L741

**SonoScape**



**12L-B**



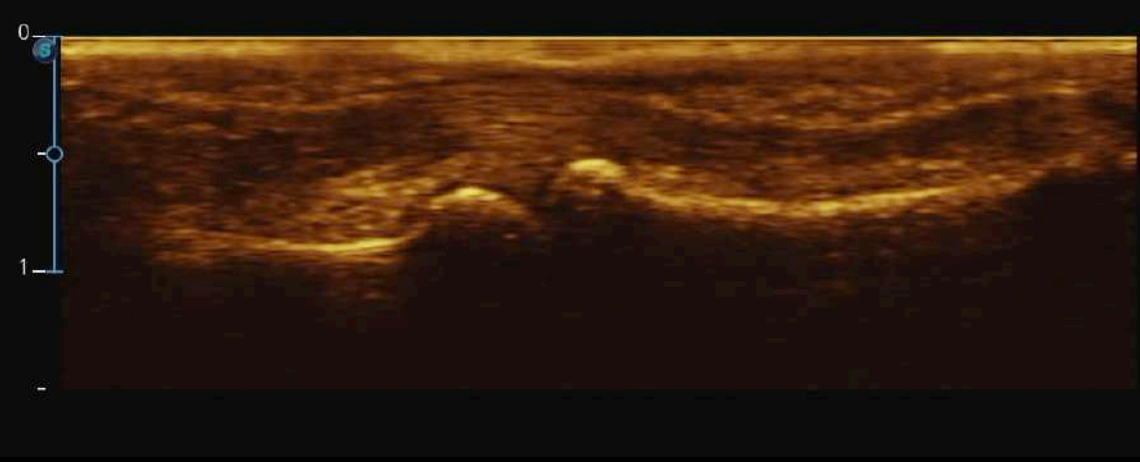
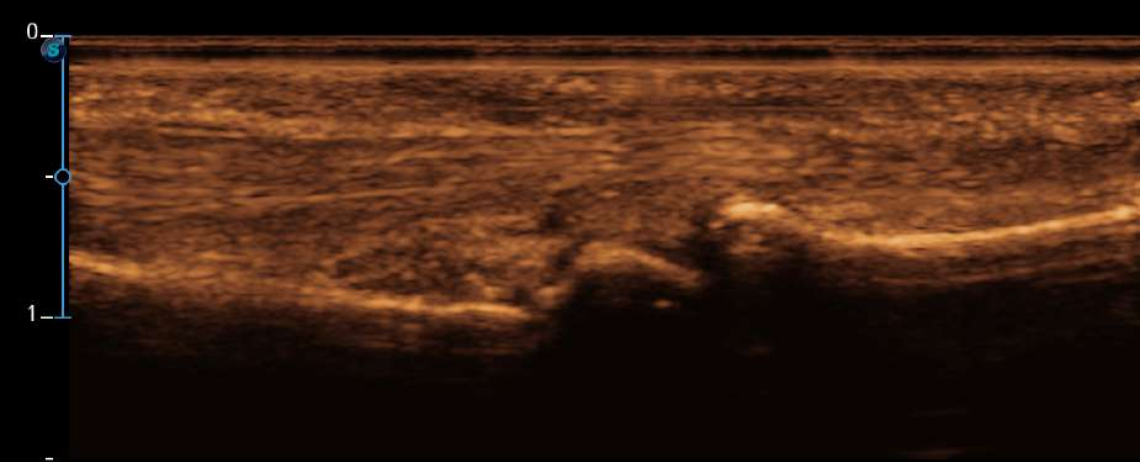
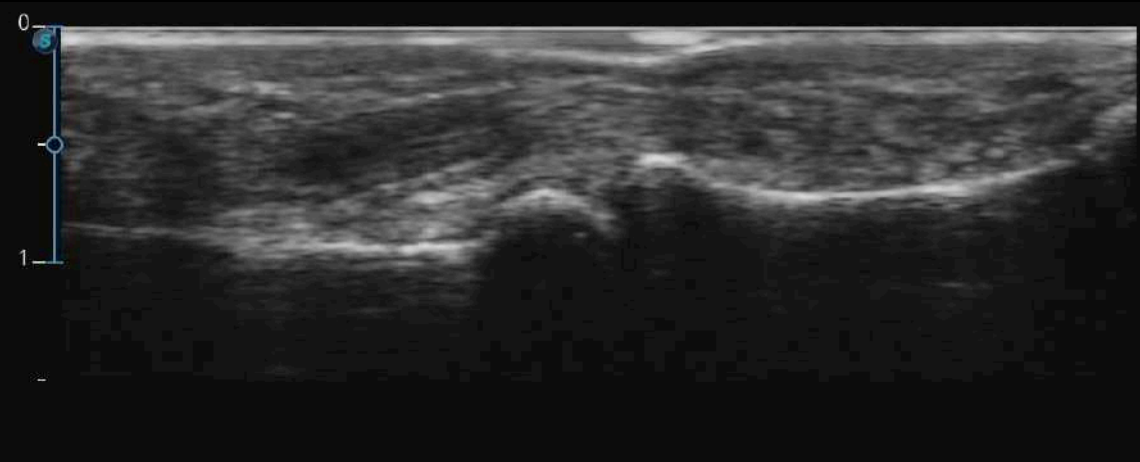
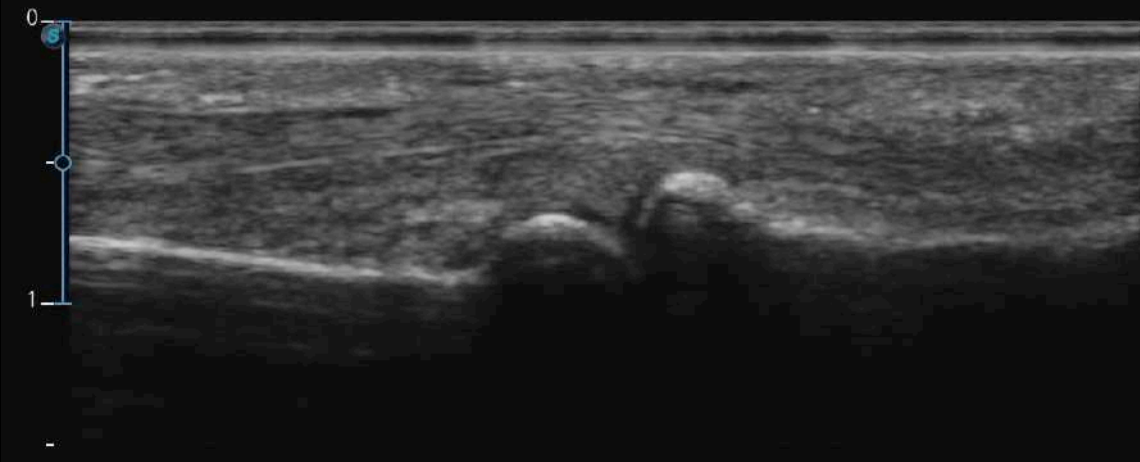
**L741**



# Image Comparison

12L-B VS. L741

**SonoScape**

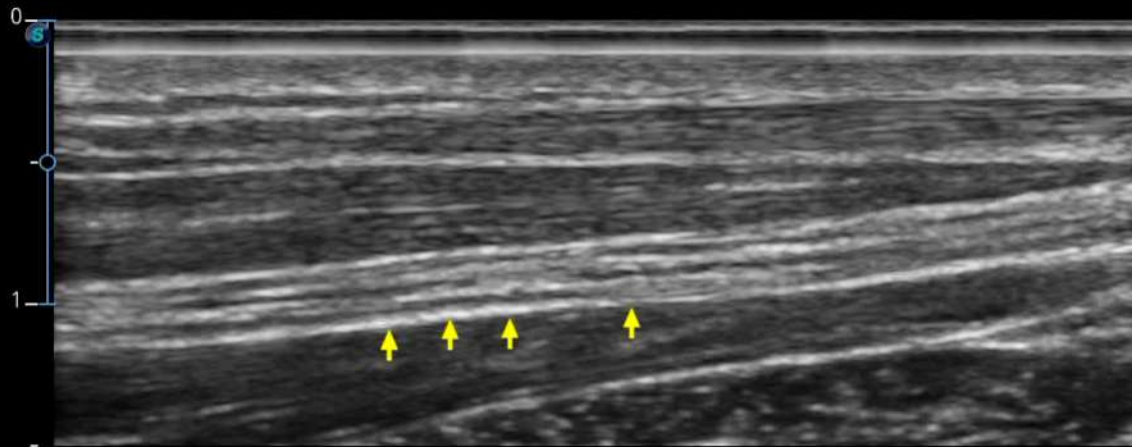


**12L-B**

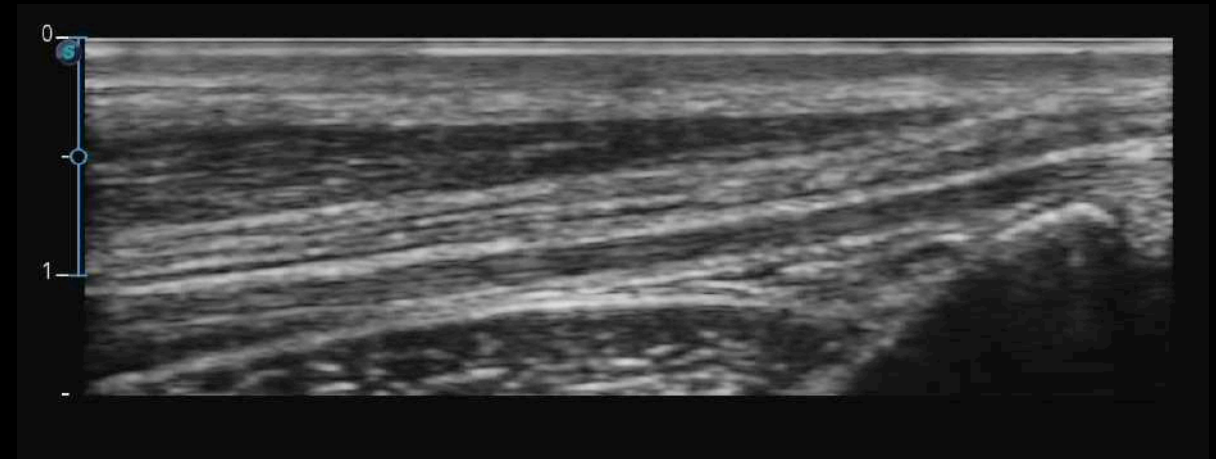
**L741**

# Image Comparison 12L-B VS. L741

**SonoScape**



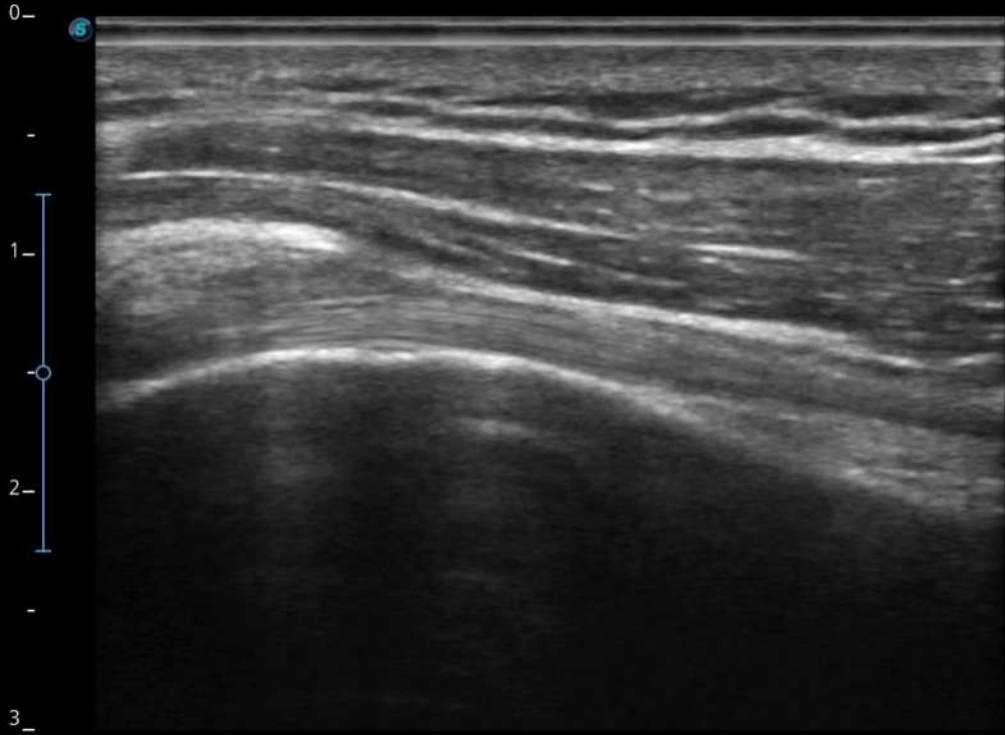
**12L-B**



**L741**

# Image Comparison

12L-B VS. L741



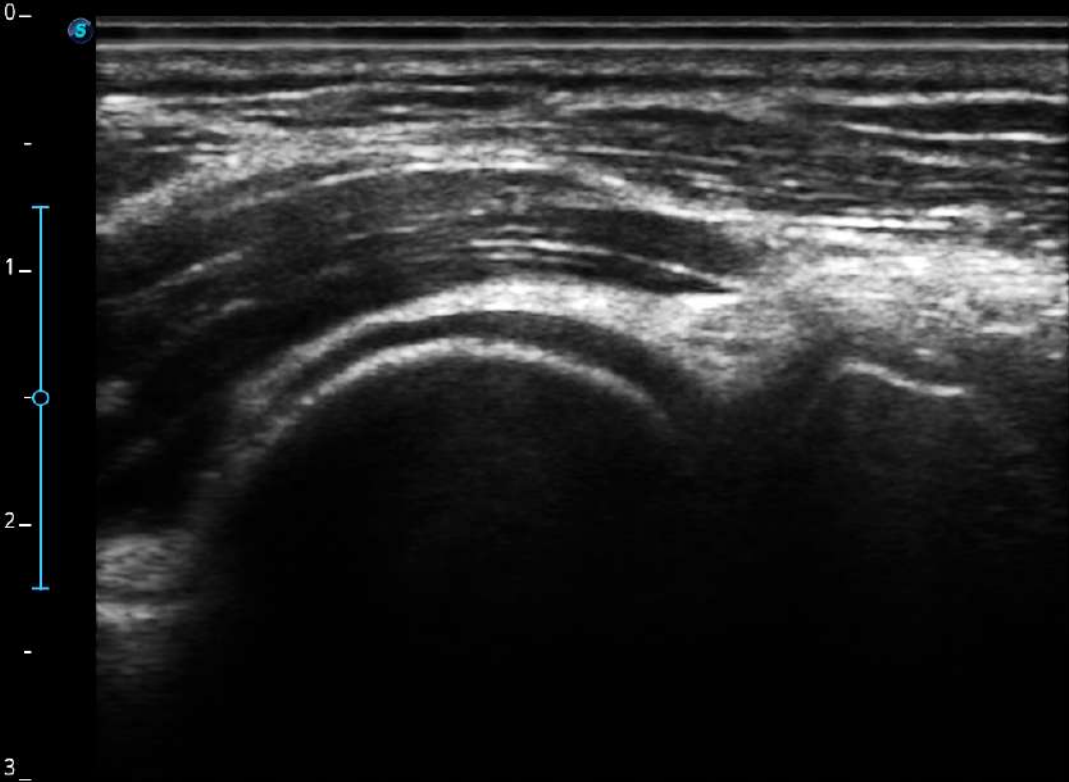
**12L-B**



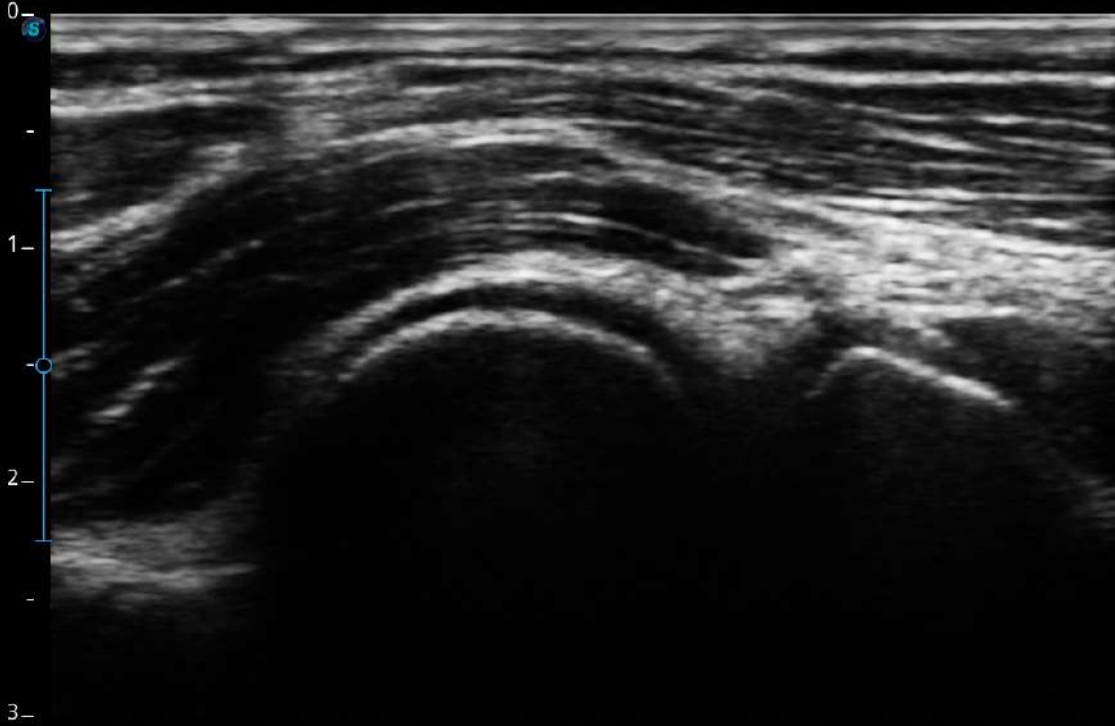
**L741**

# Image Comparison

12L-B VS. L741



**12L-B**

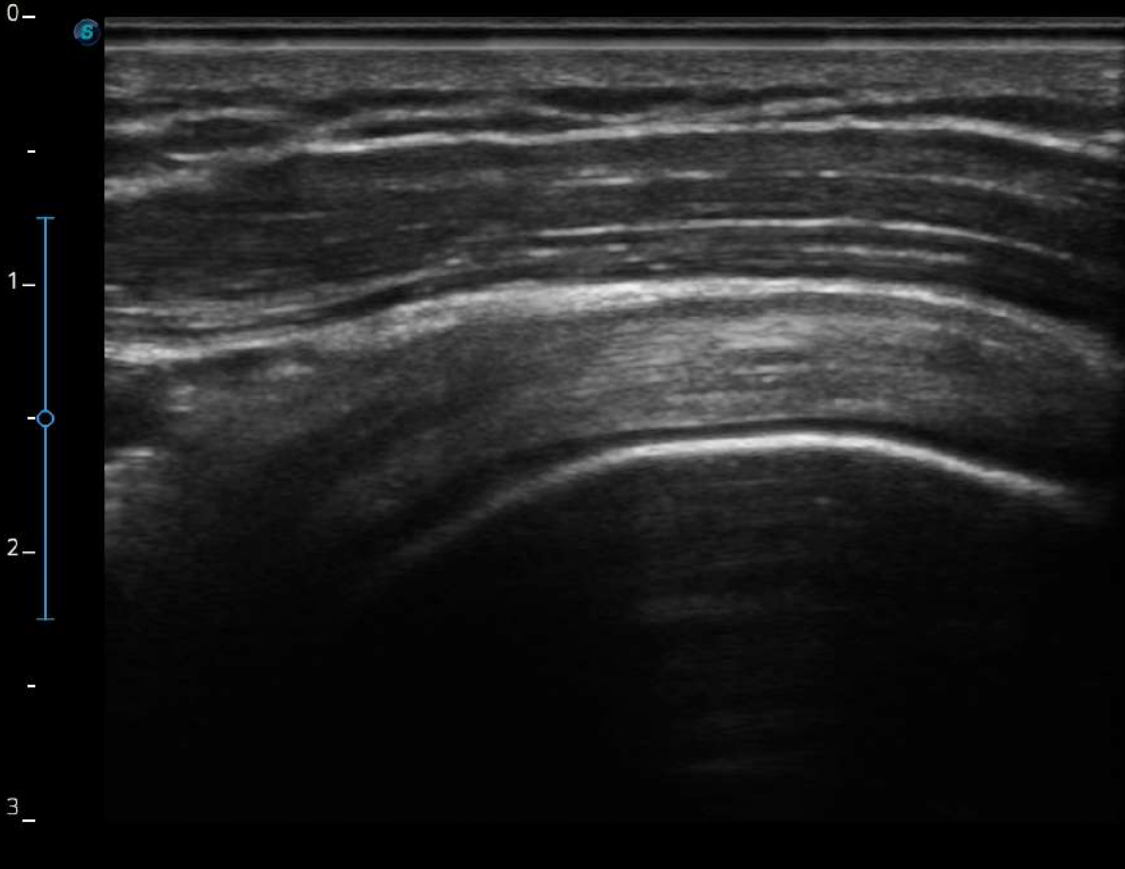


**L741**

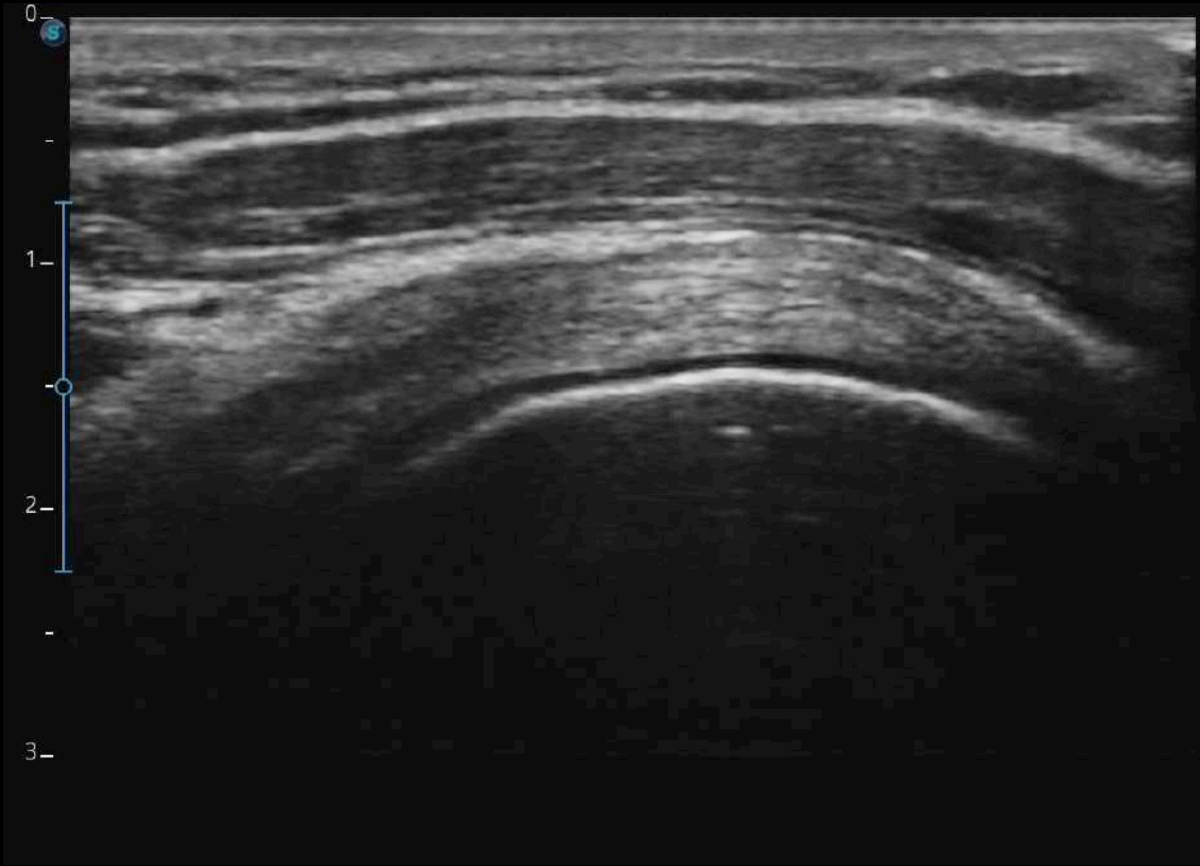
# Image Comparison

12L-B VS. L741

**SonoScape**



**12L-B**



**L741**

**SonoScape**

**Thank You**



## Face Book SonoScape



SonoScape Medical Corp.

November 6 at 8:59 PM · 🌐



We are enthusiastic to announce the new software version(5.0.5.1) of #X\_Series. SonoScape persistently renovates the X Series and makes it compatible with the new generation transducer 12L-B this time. Specifically, in MSK examination, the 12L-B contributes to more clarity in the image of the skin layer, as well as superficial ligaments and tendons.

Meanwhile, the X Series maintains its excellent performance in the sensitivity, continuity and gradient for the blood flow.

#... See More



## LinkedIn SonoScape



SonoScape Europe Ultrasound

740 位关注者

2 周前 · 已编辑 · 🌐

We are proud to announce that new **5.0.5.1** software version of X Series has been released. **#SonoScape** continues our revolution in X Series with the introduction of the new transducer **#12L-B**. New high frequency probe will achieve new levels of clarity in the skin layers, as well as superficial ligaments and tendons in MSK examinations.

**#SonoScape #Ultrasound #MSK #X3 #X5**

[查看译文](#)

